



UNIVERSITY OF CAMBRIDGE INTERNATIONAL EXAMINATIONS
General Certificate of Education Ordinary Level

CANDIDATE
NAME

CENTRE
NUMBER

--	--	--	--	--	--

CANDIDATE
NUMBER

--	--	--	--	--	--



ADDITIONAL MATHEMATICS

4037/21

Paper 2

October/November 2011

2 hours

Candidates answer on the Question Paper.

No Additional Materials are required.

READ THESE INSTRUCTIONS FIRST

Write your Centre number, candidate number and name on all the work you hand in.
Write in dark blue or black pen.
You may use a pencil for any diagrams or graphs.
Do not use staples, paper clips, highlighters, glue or correction fluid.

Answer **all** the questions.
Give non-exact numerical answers correct to 3 significant figures, or 1 decimal place in the case of angles in degrees, unless a different level of accuracy is specified in the question.
The use of an electronic calculator is expected, where appropriate.
You are reminded of the need for clear presentation in your answers.

At the end of the examination, fasten all your work securely together.
The number of marks is given in brackets [] at the end of each question or part question.
The total number of marks for this paper is 80.

For Examiner's Use	
1	
2	
3	
4	
5	
6	
7	
8	
9	
10	
11	
12	
Total	

This document consists of **18** printed pages and **2** blank pages.



Mathematical FormulaeFor
Examiner's
Use**1. ALGEBRA***Quadratic Equation*For the equation $ax^2 + bx + c = 0$,

$$x = \frac{-b \pm \sqrt{b^2 - 4ac}}{2a} .$$

Binomial Theorem

$$(a + b)^n = a^n + \binom{n}{1} a^{n-1} b + \binom{n}{2} a^{n-2} b^2 + \dots + \binom{n}{r} a^{n-r} b^r + \dots + b^n,$$

where n is a positive integer and $\binom{n}{r} = \frac{n!}{(n-r)!r!}$.

2. TRIGONOMETRY*Identities*

$$\sin^2 A + \cos^2 A = 1$$

$$\sec^2 A = 1 + \tan^2 A$$

$$\operatorname{cosec}^2 A = 1 + \cot^2 A$$

Formulae for ΔABC

$$\frac{a}{\sin A} = \frac{b}{\sin B} = \frac{c}{\sin C}$$

$$a^2 = b^2 + c^2 - 2bc \cos A$$

$$\Delta = \frac{1}{2} bc \sin A$$

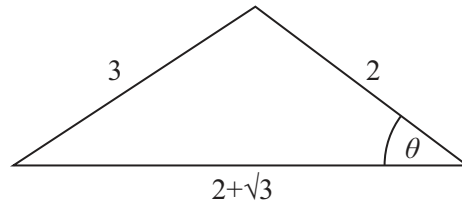
1 Solve the equation $|4x - 5| = 21$.

[3]

*For
Examiner's
Use*

2 Given that the straight line $y = 3x + c$ is a tangent to the curve $y = x^2 + 9x + k$, express k in terms of c . [4]

3



For
Examiner's
Use

Without using a calculator, find the value of $\cos\theta$, giving your answer in the form $\frac{a + b\sqrt{3}}{c}$, where a , b and c are integers. [5]

- 4 (i) Given that $y = \frac{1}{x^2 + 3}$, show that $\frac{dy}{dx} = \frac{kx}{(x^2 + 3)^2}$, where k is a constant to be found. [2]

*For
Examiner's
Use*

- (ii) Hence find $\int \frac{6x}{(x^2 + 3)^2} dx$ and evaluate $\int_1^3 \frac{6x}{(x^2 + 3)^2} dx$. [3]

- 5 (a) The functions f and g are defined, for $x \in \mathbb{R}$, by
 $f : x \mapsto 2x + 3$,
 $g : x \mapsto x^2 - 1$.

Find $fg(4)$.

[2]

For
Examiner's
Use

- (b) The functions h and k are defined, for $x > 0$, by
 $h : x \mapsto x + 4$,
 $k : x \mapsto \sqrt{x}$.

Express each of the following in terms of h and k .

(i) $x \mapsto \sqrt{x + 4}$

[1]

(ii) $x \mapsto x + 8$

[1]

(iii) $x \mapsto x^2 - 4$

[2]

6 Solutions to this question by accurate drawing will not be accepted.

The points $A(1, 4)$, $B(3, 8)$, $C(13, 13)$ and D are the vertices of a trapezium in which AB is parallel to DC and angle BAD is 90° . Find the coordinates of D .

[6]

*For
Examiner's
Use*

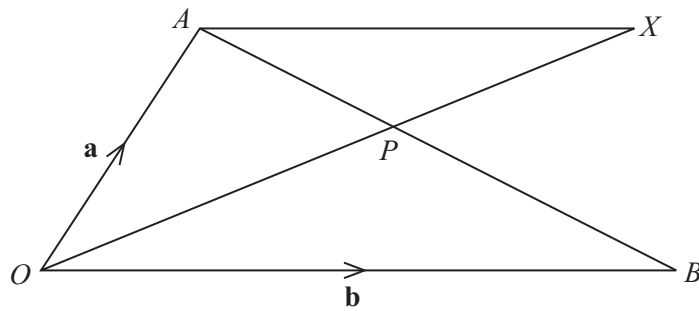
7 (a) Given that $\tan x = p$, find an expression, in terms of p , for $\operatorname{cosec}^2 x$.

[3]

*For
Examiner's
Use*

(b) Prove that $(1 + \sec \theta)(1 - \cos \theta) = \sin \theta \tan \theta$.

[4]



In the diagram $\vec{OA} = \mathbf{a}$, $\vec{OB} = \mathbf{b}$ and $\vec{AP} = \frac{2}{5} \vec{AB}$.

(i) Given that $\vec{OX} = \mu \vec{OP}$, where μ is a constant, express \vec{OX} in terms of μ , \mathbf{a} and \mathbf{b} . [3]

(ii) Given also that $\vec{AX} = \lambda \vec{OB}$, where λ is a constant, use a vector method to find the value of μ and of λ . [5]

- 9 The table shows experimental values of two variables x and y .

x	1	2	3	4	5
y	3.40	2.92	2.93	3.10	3.34

For
Examiner's
Use

It is known that x and y are related by the equation $y = \frac{a}{\sqrt{x}} + bx$, where a and b are constants.

- (i) Complete the following table.

$x \sqrt{x}$					
$y \sqrt{x}$					

[1]

- (ii) On the grid on page 11 plot $y\sqrt{x}$ against $x\sqrt{x}$ and draw a straight line graph.

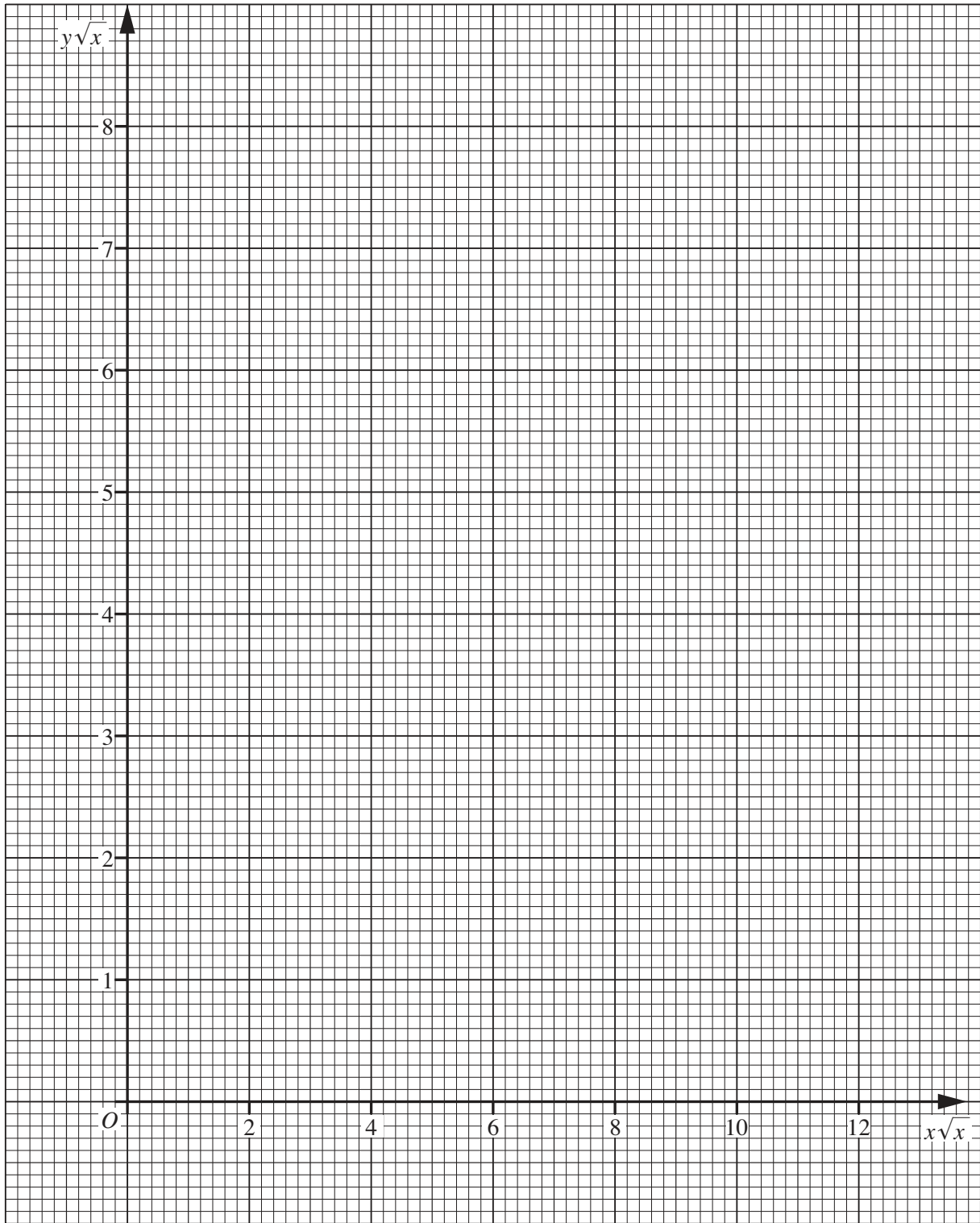
[2]

- (iii) Use your graph to estimate the value of a and of b .

[3]

- (iv) Estimate the value of y when x is 1.5.

[1]



10 It is given that $\mathbf{A} = \begin{pmatrix} 3 & 2 \\ 1 & -5 \end{pmatrix}$ and $\mathbf{B} = \begin{pmatrix} 1 & 4 \\ -2 & 3 \end{pmatrix}$.

(i) Find $2\mathbf{A} - \mathbf{B}$.

[2]

*For
Examiner's
Use*

(ii) Find \mathbf{BA} .

[2]

(iii) Find the inverse matrix, \mathbf{A}^{-1} .

[2]

*For
Examiner's
Use*

(iv) Use your answer to part (iii) to solve the simultaneous equations

$$3x + 2y = 23,$$

$$x - 5y = 19.$$

[2]

11 (a) (i) Solve $\frac{5^{2x+3}}{25^{2x}} = \frac{25^{2-x}}{125^x}$.

[3]

*For
Examiner's
Use*

(ii) Solve $\lg y + \lg(y - 15) = 2$.

[4]

(b) Without using a calculator, and showing each stage of your working, find the value of

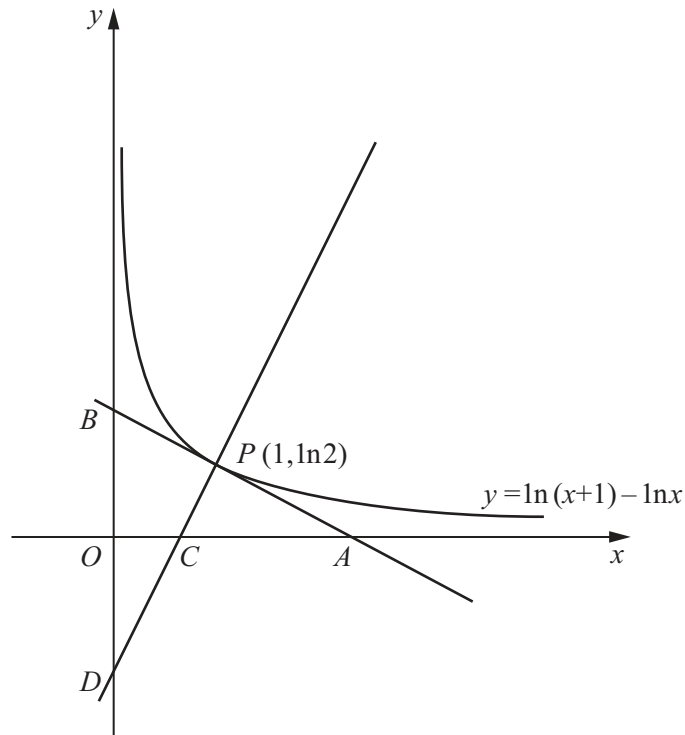
$$2 \log_{12} 4 - \frac{1}{2} \log_{12} 81 + 4 \log_{12} 3.$$

[3]

*For
Examiner's
Use*

12 Answer only **one** of the following two alternatives.

EITHER



The diagram shows part of the curve $y = \ln(x+1) - \ln x$. The tangent to the curve at the point $P(1, \ln 2)$ meets the x -axis at A and the y -axis at B . The normal to the curve at P meets the x -axis at C and the y -axis at D .

- (i) Find, in terms of $\ln 2$, the coordinates of A , B , C and D . [8]
- (ii) Given that $\frac{\text{Area of triangle } BPD}{\text{Area of triangle } APC} = \frac{1}{k}$, express k in terms of $\ln 2$. [3]

OR

A curve has equation $y = xe^x$. The curve has a stationary point at P .

- (i) Find, in terms of e , the coordinates of P and determine the nature of this stationary point. [5]

The normal to the curve at the point $Q(1, e)$ meets the x -axis at R and the y -axis at S .

- (ii) Find, in terms of e , the area of triangle ORS , where O is the origin. [6]

BLANK PAGE

Permission to reproduce items where third-party owned material protected by copyright is included has been sought and cleared where possible. Every reasonable effort has been made by the publisher (UCLES) to trace copyright holders, but if any items requiring clearance have unwittingly been included, the publisher will be pleased to make amends at the earliest possible opportunity.

University of Cambridge International Examinations is part of the Cambridge Assessment Group. Cambridge Assessment is the brand name of University of Cambridge Local Examinations Syndicate (UCLES), which is itself a department of the University of Cambridge.